

Torque

This shawl was inspired by the magnificent Celtic toros from the collection of [the museum of Epernay](#) (Marne, France) exposed to [the museum of Bibracte](#) (Nièvre, France) in 2017.

These sublime jewels, generally quite masculine and worked with finesse, immediately reminded me of delicate twists, which I added lace patterns to give this shawl all its femininity.

Soft triangle, this sideways shawl has two large parts: one with increases, the other with decreases. Explanations can be followed row by row or by diagrams.



Material :

[Knitting kit is available on this page, it's a limited edition.](#)

5 balls of Calycé Anny Blatt

needles 3,5mm

[cable needle](#)

2 stitch markers

1 hook 0,75mm

1 bag of beads preciosa 5/0

[blocking material](#) or [T pins](#).

Points and abbreviations :

st : stitch

k : knit

p : purl

sl : slip stitch knitwise

slb :slip stitch knitwise including a bead with the hook.

Yo : yarn over

K2tog :knit 2 stitches together.

SSK :Slip Slip Knit

m1 : make 1

m2 : knit the stitch 2 times: 1 time through the front strand then once through the back strand.

BB : make bubble : knit the stitch at the same time 5 times, turn the work, purl the 5 stitches, turn the work over again, bind off the 4 stitches by knitting them.

M :stitch marker

R : row

(...)x... : Knit the pattern in parentheses as many times as it is indicated after the "x".

* ... * repeat the pattern between * and * as many times as necessary to reach the end of the row or the next stitch marker.

Garter stitch : knit all the stitches of every rows

Stocking stitch : knit the stitches on the right side rows and purl the stitches of the wrong side rows.

Twists :

T1 : over 2 stitches , slip the first stitch on the cable needle placed **in front** of the work. Knit the next stitch , pick up the stitch and knit it.

T2 : over 2 stitches , slip the first stitch on the cable needle placed **behind** of the work. Knit the next stitch , pick up the stitch and knit it.

T3 : over 4 stitches ,slip 2 stitches on the cable needle placed **in front** of the work. Knit the 2 next stitches , pick up the stitches and knit them.

T4 : over 4 stitches , slip 2 stitches on the cable needle placed **behind** of the work. Knit the 2 next stitches , pick up the stitches and knit them.

T5 : over 3 stitches , slip 2 stitches on the cable needle placed **in front** of the work. Knit the next stitch, pick up the stitches and knit them.

T6 : over 3 stitches , slip the first stitch on the cable needle placed **behind** of the work. Knit the 2 next stitches, pick up the stitch and knit it.

T7 : over 6 stitches , slip 3 stitches on the cable needle placed **behind** of the work. Knit the 3 next stitches , pick up the stitches and knit them.

T8 : over 8 stitches , slip 4 stitches on the cable needle placed **behind** of the work. Knit the 4 next stitches , pick up the stitches and knit them.

T9 : over 10 stitches , slip 5 stitches on the cable needle placed **behind** of the work. Knit the 5 next stitches , pick up the stitches and knit them.

Gauge (stockinette , 10cm/10cm) : 24 stitches/30 rows.

Size of the completed work and blocked: 220 cm / 35cm at the widest.

Model: Camille Delahaie, Les aiguilles de Camille.com.

This pattern is intended for strictly personal use, any commercial use of this model or its achievements is prohibited, unless prior written consent of the author.

Work with diagrams :

For this process, provide diagrams 1 and 2 and their legend.

Cast on 37 sts, knit 4 rows , then on the fifth row, put the stitch markers: knit 6 stitches, put a marker, knit 2 stitches, put the second marker. Knit the end of the row and do another knit wrong side row.

Increases Part :

Take the 2 diagrams, and knit as indicated.

Basic principle of the knitting of the right side rows: knit the first 6 stitches , slip the first stitch marker, make the increase if necessary then knit the next stitches until the second stitch marker, slip the marker, then knit following the diagram.

Basic principle of the knitting of the wrong side rows: follow the diagram for the lace part, then get to the first stitch marker purl all stitches, slip the second marker and knit the 6 last stitches.

Increases are on the rows 3, 9, 15, 21, 27, 33 and 39: after the garter stitch at the beginning of the row and the first stitch marker, make 1 and continue knitting the next stitches in stocking stitch until the second stitch marker and then follow the indications of the diagrams.

Repetitions of diagrams: start with diagram 1, follow with diagram 2. Proceed in this way 3 times. Then move on the decreases part.

Decreases part :

Basic principle of the knitting of the right side rows: knit the first 6 stitches , slip the first stitch marker, make the decrease (K2tog) if necessary, then knit the next stitches until the second stitch marker, slip the marker, then knit following the diagram.

Basic principle of the knitting of the wrong side rows: follow the diagram for the lace part, then get to the first stitch marker purl all stitches, slip the second marker and knit the 6 last stitches.

Decreases are on the wrong side rows 3, 9, 15, 21, 27, 33 et 39 :after the 6 stitches in garter stitch and the first stitch marker, knit 2 stitches together, then keep on knitting. After the second stitch marker follow the indications of diagrams.

Repetitions of diagrams: start with diagram 1, follow with diagram 2. Proceed in this way 3 times. Make 6 rows garter st and bind off all stiches. Wash the shawl, and block it. Tuck in the threads and cut them.

Work with the written pattern:

Cast on 37 sts, knit 4 rows , then on the fifth row, put the stitch markers: knit 6 stitches, put a marker, knit 2 stitches, put the second marker. Knit the end of the row and do another knit wrong side row.

Increases part : Knit these 84 rows 3 times.

Row 1 (right side row): k6, M,*k *,M,T2, k2, K2tog, Yo, T4, Yo, SSK, k2, T1, k2, (Yo, K2tog)x5, k1.

Rows 2, 6, 8, 12, 14, 18, 20, 24, 26, 30, 32, 36, 38, 42, 44, 48, 50, 54, 56, 60, 62, 66, 68, 72, 74, 78, 80, and 84(wrong side rows) : sl1, *p *, M, *p *, M, k6.

Row 3 :k6, M, m1 *k *, M,T2, k2, K2tog,Yo, m2,k2,m2 , Yo, SSK, k2, T1, k3,(Yo, K2tog)x4, Yo, k2.

Rows 4, 10, 16, 22, 28, 34, 40, 46, 52, 58, 64, 70, 76 and 82 : insert a bead with the hook on the first stitch and slip it from the left needle to the right knitwise, *p *, M, *p *, M, k6.

Row 5 : k6, M,*k *,M,T2, k2, K2tog, Yo, k6, Yo, SSK, k2, T1, k4, (Yo, K2tog)x4, Yo, k2.

Row 7 :k6, M,*k *,M,T2, k2, K2tog, Yo, T7, Yo, SSK, k2, T1, k5, (Yo, K2tog)x4, Yo, k2.

Row 9 : k6, M, m1 *k *, M,T2, k2, K2tog,Yo,k1, m2,k2 ,m2 k1,Yo, SSK, k2, T1, k6, (Yo, K2tog)x4, Yo, k2.

Row 11 :k6, M,*k *,M,T2, k2, K2tog, Yo, k8, Yo, SSK, k2, T1, k7, (Yo, K2tog)x4, Yo, k2.

Row 13 :k6, M,*k *,M,T2, k2, K2tog, Yo, T8, Yo, SSK, k2, T1, k8, (Yo, K2tog)x4, Yo, k2.

Row 15 : k6, M, m1 *k *, M,T2, k2, K2tog,Yo, k2, m2, k2,m2 k2,Yo, SSK, k2, T1, k9, (Yo, K2tog)x4, Yo, k2.

Row 17 :k6, M,*k *,M,T2, k2, K2tog, Yo, k10 ,Yo, SSK, k2,T1, k10, (Yo, K2tog)x4, Yo, k2.

Row 19 :k6, M,*k *,M,T2, k2, K2tog, Yo, T9,Yo, SSK, k2,T1, k11, (Yo, K2tog)x4, Yo, k2.

Row 21 : k6, M, m1 *k *, M,T2, k2, K2tog,Yo, k10,Yo, SSK, k2,T1, k12,(Yo, K2tog)x4, Yo, k2.

Row 23 :k6, M,*k *,M,T2, k2, K2tog, Yo, k10,Yo, SSK, k2,T1, k10, (SSK, Yo)x5, SSK, k1.

Row 25 :k6, M,*k *,M,T2, k2, K2tog, Yo, T4, k2, T3,Yo, SSK, k2,T1, k9, (SSK, Yo)x5, SSK, k1.

Row27 :k6, M, m1 *k *, M,T2, k2, K2tog,Yo, k10,Yo, SSK, k2, T1, k8, (SSK, Yo)x5, SSK, k1.

Row 29 :k6, M,*k *,M,T2, k2, K2tog, Yo,T4, k2, T3, Yo, SSK, k2,T1, k7, (SSK, Yo)x5, SSK, k1.

Row 31 :k6, M,*k *,M,T2, k2, K2tog, Yo, k3, SSK, K2tog, k3, Yo, SSK, k2, T1, k6, (SSK, Yo)x5, SSK, k1.

Row 33 :k6, M, m1 *k *, M,T2, k2, K2tog, Yo, T4, T3, Yo, SSK, k2,T1, k5, (SSK, Yo)x5, SSK, k1.

Row 35 :k6, M,*k *,M,T2, k2, K2tog, Yo, k2, SSK, K2tog, k2, Yo, SSK, k2, T1, k4, (SSK, Yo)x5, SSK, k1.

Row 37 :k6, M,*k *,M,T2, k2, K2tog, Yo, T6, T5, Yo, SSK, k2, T1, k3, (SSK, Yo)x5, SSK, k1.

Row 39 :k6, M, m1 *k *, M,T2, k2, K2tog, Yo, k1, SSK, K2tog, k1, Yo, SSK, k2,T1, k2, (SSK, Yo)x5, SSK, k1.

Row 41 :k6, M,*k *,M,T2, k2, K2tog, Yo, T2, T1, Yo, SSK, k2,T1, k1, (SSK, Yo)x5, SSK, k1.

Row 43 :k6, M,*k *,M,T2, k2, K2tog, Yo, k1, BB, k2, Yo, SSK, k2,T1, k2, (Yo, K2tog)x5, k1.

Row 45 :k6, M, m1 *k *, M,T2, k2, K2tog, Yo, T1, T2, Yo, SSK, k2,T1, k3, (Yo, K2tog)x4, Yo, k2.

Row 47 :k6, M,*k *,M,T2, k2, K2tog, Yo, m2,k2,m2, Yo, SSK, k2,T1, k4,(Yo, K2tog)x4, Yo, k2.

Row 49 :k6, M,*k *,M,T2, k2, K2tog, Yo, T5, T6, Yo, SSK, k2, T1, k5, (Yo, K2tog)x4, Yo, k2.

Row 51 :k6, M, m1 *k *, M,T2, k2, K2tog, Yo, k1, m2,k2, m2 k1, Yo, SSK, k2,T1, k6, (Yo, K2tog)x4, Yo, k2.

Row 53 :k6, M,*k *,M,T2, k2, K2tog, Yo, T3, T4, Yo, SSK, k2, T1, k7,(Yo, K2tog)x4, Yo, k2.

Row 55 :k6, M,*k *,M,T2, k2, K2tog, Yo, k2, m2,k2,m2, k2, Yo, SSK, k2,T1, k8,(Yo, K2tog)x4, Yo, k2.

Row 57 :k6, M, m1 *k *, M,T2, k2, K2tog, Yo, T3, k2, T4, Yo, SSK, k2,T1, k9, (Yo, K2tog)x4, Yo, k2.

Row 59 :k6, M,*k *,M,T2, k2, K2tog, Yo, k10, Yo, SSK, k2, T1, k10, (Yo, K2tog)x4, Yo, k2.

Row 61 :k6, M,*k *,M,T2, k2, K2tog, Yo, T3, k2, T4, Yo, SSK, k2,T1, k11, (Yo, K2tog)x4, Yo, k2.

Row 63 :k6, M, m1 *k *, M,T2, k2, K2tog, Yo, k10, Yo, SSK, k2, T1, k12,(Yo, K2tog)x4, Yo, k2.

Row 65 :k6, M,*k *,M,T2, k2, K2tog, Yo, k10, Yo, SSK, k2, T1, k10, (SSK, Yo)x5, SSK, k1.

Row 67 :k6, M,*k *,M,T2, k2, K2tog, Yo, T9, Yo, SSK, k2,T1, k9, (SSK, Yo)x5, SSK, k1.

Row 69 :k6, M, m1 *k *, M,T2, k2, K2tog, Yo, k3, SSK, K2tog, k3, Yo, SSK, k2, T1, k8, (SSK, Yo)x5, SSK, k1.

Row 71 :k6, M,*k *,M,T2, k2, K2tog, Yo, k8, Yo, SSK, k2, T1, k7, (SSK, Yo)x5, SSK, k1.

Row 73 :k6, M,*k *,M,T2, k2, K2tog, Yo, T8,Yo, SSK, k2, T1, k6, (SSK, Yo)x5, SSK, k1.

Row 75 :k6, M, m1 *k *, M,T2, k2, K2tog,Yo,k2 , SSK, K2tog, k2, Yo, SSK, k2,T1, k5, (SSK, Yo)x5, SSK, k1.

Row 77 :k6, M,*k *,M,T2, k2, K2tog, Yo, k6, Yo, SSK, k2,T1, k4,(SSK, Yo)x5, SSK, k1.

Row 79 : k6, M,*k *,M,T2, k2, K2tog, Yo, T7, Yo, SSK, k2,T1, k3, (SSK, Yo)x5, SSK, k1.

Row 81 : k6, M, m1 *k *, M,T2, k2, K2tog,Yo, k1, SSK, K2tog, k1 Yo, SSK, k2, T1, k2, (SSK, Yo)x5, SSK, k1.

Row 83 : k6, M,*k *,M,T2, k2, K2tog, Yo, k4, Yo, SSK, k2,T1, k1, (SSK, Yo)x5, SSK, k1.

Decreases part : knit these 84 rows 3 times.

Row 1 (right side row): k6, M,*k *,M,T2, k2, K2tog, Yo, T4, Yo, SSK, k2, T1, k2, (Yo, K2tog)x5, k1.

Rows 2, 6, 8, 12, 14, 18, 20, 24, 26, 30, 32, 36, 38, 42, 44, 48, 50, 54, 56, 60, 62, 66, 68, 72, 74, 78, 80, and 84(wrong side rows) : sl1, *p *, M, *p *, M, k6.

Row 3 :k6, M, K2tog *k *, M,T2, k2, K2tog,Yo, m2,k2,m2 , Yo, SSK, k2, T1, k3,(Yo, K2tog)x4, Yo, k2.

Rows 4, 10, 16, 22, 28, 34, 40, 46, 52, 58, 64, 70, 76 and 82 : insert a bead with the hook on the first stitch and slip it from the left needle to the right knitwise, *p *, M, *p *, M, k6.

Row 5 : k6, M,*k *,M,T2, k2, K2tog, Yo, k6, Yo, SSK, k2, T1, k4, (Yo, K2tog)x4, Yo, k2.

Row 7 :k6, M,*k *,M,T2, k2, K2tog, Yo, T7, Yo, SSK, k2, T1, k5, (Yo, K2tog)x4, Yo, k2.

Row 9 : k6, M, K2tog *k *, M,T2, k2, K2tog,Yo,k1, m2,k2 ,m2 k1,Yo, SSK, k2, T1, k6, (Yo, K2tog)x4, Yo, k2.

Row 11 :k6, M,*k *,M,T2, k2, K2tog, Yo, k8, Yo, SSK, k2, T1, k7, (Yo, K2tog)x4, Yo, k2.

Row 13 :k6, M,*k *,M,T2, k2, K2tog, Yo, T8, Yo, SSK, k2, T1, k8, (Yo, K2tog)x4, Yo, k2.

Row 15 : k6, M, K2tog *k *, M,T2, k2, K2tog,Yo, k2, m2, k2,m2 k2,Yo, SSK, k2, T1, k9, (Yo, K2tog)x4, Yo, k2.

Row 17 :k6, M,*k *,M,T2, k2, K2tog, Yo, k10 ,Yo, SSK, k2,T1, k10, (Yo, K2tog)x4, Yo, k2.

Row 19 :k6, M,*k *,M,T2, k2, K2tog, Yo, T9,Yo, SSK, k2,T1, k11, (Yo, K2tog)x4, Yo, k2.

Row 21 : k6, M, K2tog *k *, M,T2, k2, K2tog,Yo, k10,Yo, SSK, k2,T1, k12,(Yo, K2tog)x4, Yo, k2.

Row 23 :k6, M,*k *,M,T2, k2, K2tog, Yo, k10,Yo, SSK, k2,T1, k10, (SSK, Yo)x5, SSK, k1.

Row 25 :k6, M,*k *,M,T2, k2, K2tog, Yo, T4, k2, T3,Yo, SSK, k2,T1, k9, (SSK, Yo)x5, SSK, k1.

Row 27 :k6, M, K2tog *k *, M,T2, k2, K2tog,Yo, k10,Yo, SSK, k2, T1, k8, (SSK, Yo)x5, SSK, k1.

Row 29 :k6, M,*k *,M,T2, k2, K2tog, Yo,T4, k2, T3, Yo, SSK, k2,T1, k7, (SSK, Yo)x5, SSK, k1.

Row 31 :k6, M,*k *,M,T2, k2, K2tog, Yo, k3, SSK, K2tog, k3, Yo, SSK, k2, T1, k6, (SSK, Yo)x5, SSK, k1.

Row 33 :k6, M, K2tog *k *, M,T2, k2, K2tog,Yo, T4, T3, Yo, SSK, k2,T1, k5, (SSK, Yo)x5, SSK, k1.

Row 35 :k6, M,*k *,M,T2, k2, K2tog, Yo, k2, SSK, K2tog, k2, Yo, SSK, k2, T1, k4, (SSK, Yo)x5, SSK, k1.

Row 37 :k6, M,*k *,M,T2, k2, K2tog, Yo, T6, T5, Yo, SSK, k2, T1, k3, (SSK, Yo)x5, SSK, k1.

Row 39 :k6, M, K2tog *k *, M,T2, k2, K2tog,Yo, k1, SSK, K2tog, k1, Yo, SSK, k2,T1, k2, (SSK, Yo)x5, SSK, k1.

Row 41 :k6, M,*k *,M,T2, k2, K2tog, Yo, T2, T1, Yo, SSK, k2,T1, k1, (SSK, Yo)x5, SSK, k1.

Row 43 :k6, M,*k *,M,T2, k2, K2tog, Yo, k1, BB, k2,Yo, SSK, k2,T1, k2, (Yo, K2tog)x5, k1.

Row 45 :k6, M, K2tog *k *, M,T2, k2, K2tog, Yo, T1, T2 ,Yo, SSK, k2,T1, k3, (Yo, K2tog)x4, Yo, k2.

Row 47 :k6, M,*k *,M,T2, k2, K2tog, Yo, m2,k2,m2,Yo, SSK, k2,T1, k4,(Yo, K2tog)x4, Yo, k2.

Row 49 :k6, M,*k *,M,T2, k2, K2tog, Yo, T5, T6,Yo, SSK, k2, T1, k5, (Yo, K2tog)x4, Yo, k2.

Row 51 :k6, M, K2tog *k *, M,T2, k2, K2tog,Yo, k1, m2,k2 ,m2 k1,Yo, SSK, k2,T1, k6, (Yo, K2tog)x4, Yo, k2.

Row 53 :k6, M,*k *,M,T2, k2, K2tog, Yo, T3, T4,Yo, SSK, k2, T1, k7,(Yo, K2tog)x4, Yo, k2.

Row 55 :k6, M,*k *,M,T2, k2, K2tog, Yo,k2, m2,k2,m2, k2,Yo,SSK,k2,T1, k8,(Yo, K2tog)x4, Yo, k2.

Row 57 :k6, M, K2tog *k *, M,T2, k2, K2tog,Yo,T3, k2,T4,Yo, SSK, k2,T1,k9, (Yo, K2tog)x4, Yo, k2.

Row 59 :k6, M,*k *,M,T2, k2, K2tog, Yo, k10,Yo, SSK, k2, T1, k10, (Yo, K2tog)x4, Yo, k2.

Row 61 :k6, M,*k *,M,T2, k2, K2tog, Yo, T3, k2,T4 Yo, SSK, k2,T1, k11, (Yo, K2tog)x4, Yo, k2.

Row 63 :k6, M, K2tog *k *, M,T2, k2, K2tog,Yo, k10, Yo, SSK, k2, T1, k12,(Yo, K2tog)x4, Yo, k2.

Row 65 :k6, M,*k *,M,T2, k2, K2tog, Yo, k10, Yo, SSK, k2, T1, k10, (SSK, Yo)x5, SSK, k1.

Row 67 :k6, M,*k *,M,T2, k2, K2tog, Yo, T9, Yo, SSK, k2,T1, k9, (SSK, Yo)x5, SSK, k1.

Row 69 :k6, M, K2tog *k *, M,T2, k2, K2tog,Yo, k3, SSK, K2tog, k3, Yo, SSK, k2, T1, k8, (SSK, Yo)x5, SSK, k1.

Row 71 :k6, M,*k *,M,T2, k2, K2tog, Yo, k8, Yo, SSK, k2, T1, k7, (SSK, Yo)x5, SSK, k1.

Row 73 :k6, M,*k *,M,T2, k2, K2tog, Yo, T8,Yo, SSK, k2, T1, k6, (SSK, Yo)x5, SSK, k1.

Row 75 :k6, M, K2tog *k *, M,T2, k2, K2tog,Yo,k2 , SSK, K2tog, k2, Yo, SSK, k2,T1, k5, (SSK, Yo)x5, SSK, k1.

Row 77 :k6, M,*k *,M,T2, k2, K2tog, Yo, k6, Yo, SSK, k2,T1, k4,(SSK, Yo)x5, SSK, k1.

Row 79 : k6, M,*k *,M,T2, k2, K2tog, Yo, T7, Yo, SSK, k2,T1, k3, (SSK, Yo)x5, SSK, k1.

Row 81 : k6, M, K2tog *k *, M,T2, k2, K2tog,Yo, k1, SSK, K2tog, k1 Yo, SSK, k2, T1, k2, (SSK, Yo)x5, SSK, k1.

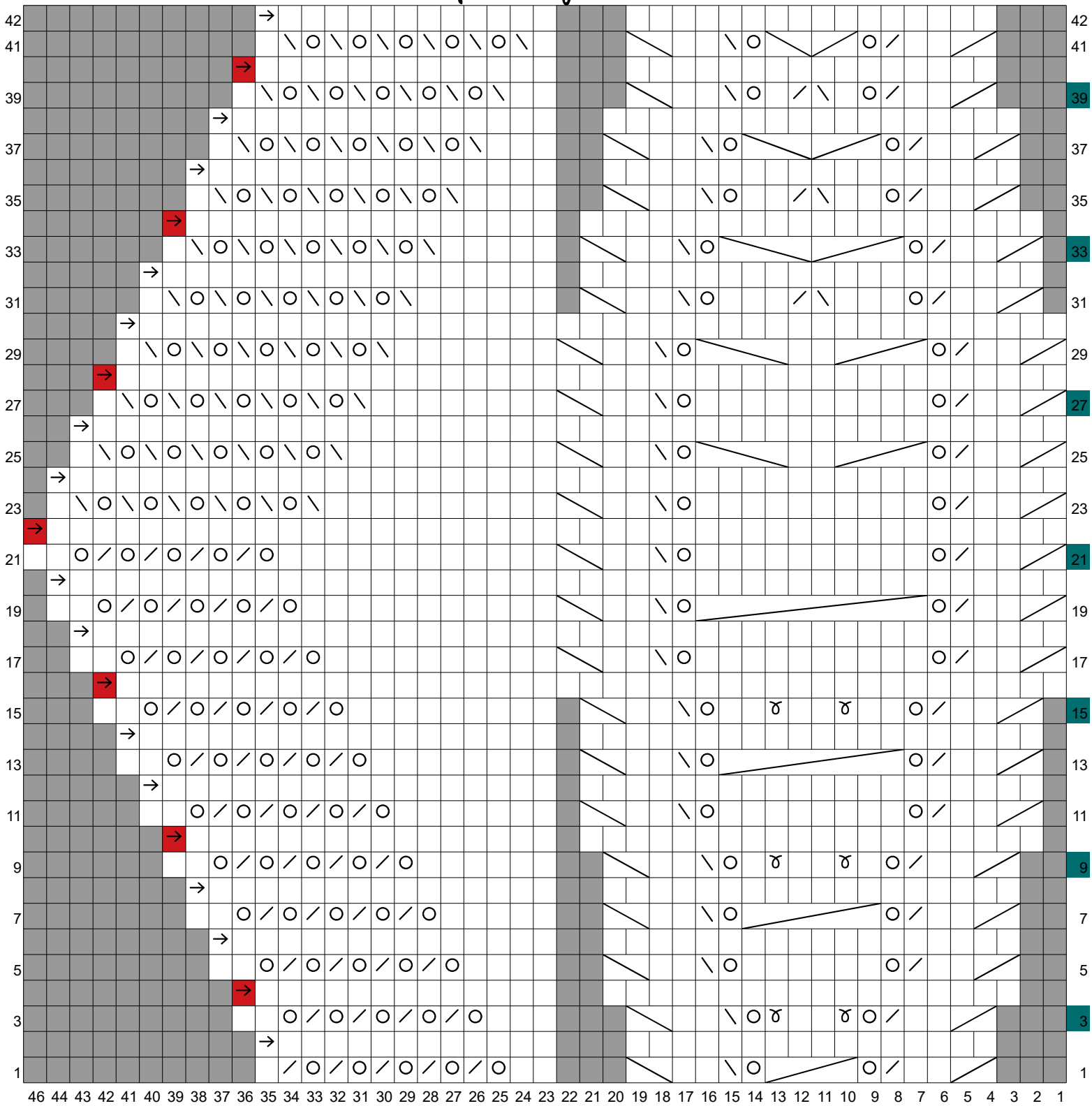
Row 83 : k6, M,*k *,M,T2, k2, K2tog, Yo, k4, Yo, SSK, k2,T1, k1, (SSK, Yo)x5, SSK, k1.

Once these 84 rows knit 3 times, finish with 6 rows of garter stitch. Bind off all stitches.

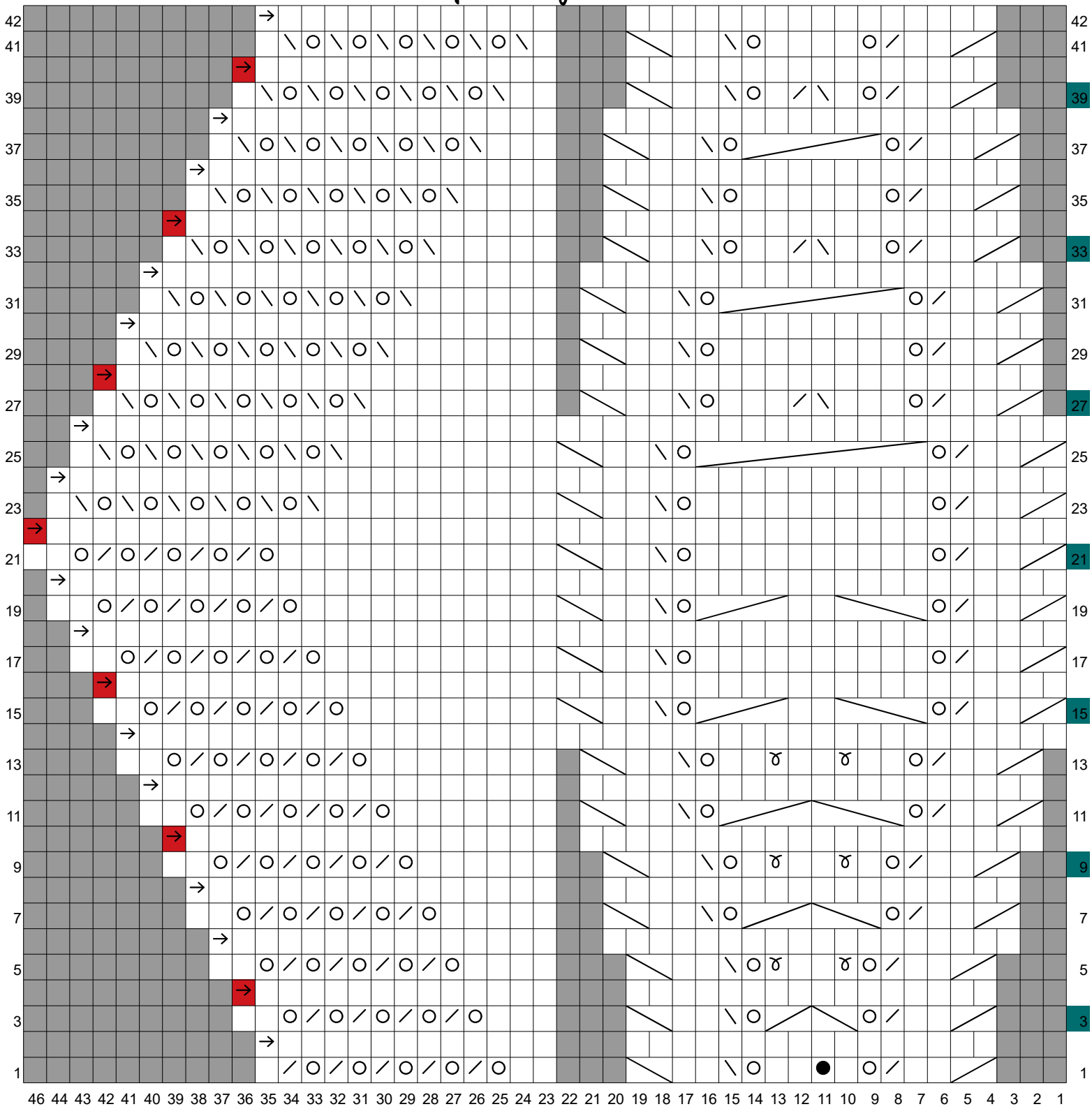
Wash the shawl, block it. Tuck in the threads and cut them.

Les aiguilles de Camille.com


Torque Diagram 1



Torque Diagram 2




Torque , diagram legend

 knit stitch on wright side , purl stitch on wrong side


 Non-existent stitch

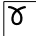
 knitwise stitch

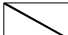
 insert a bead and knitwise stitch

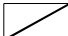
 yarn over

 knit two stitches together

 slip slip knit

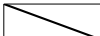
 knit the same stitch 2 times

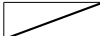
T1  twist over 2 stitches to the left


T2  twist over 2 stitches to the right

T3  twist over 4 stitches to the left

T4  twist over 4 stitches to the right

T5  twist over 3 stitches to the left

T6  twist over 3 stitches to the right

T7  twist over 6 stitches to the right

T8  twist over 8 stitches to the right

T9  twist over 10 stitches to the right

 rank showing an increase or decrease after the garter stitch edge

● bubble

Gauge : 24 stitches/30 rows.