



○ - chain - ch

⌋ - slip stitch - sl.st

⌋ - treble / double crochet
- tr / dc

⊗ - **Triple double crochet / Double single crochet.** Insert the hook into the stitch (or into the space of chains), yarn over hook and draw through a loop, (2 loops on hook), yarn over hook, insert the hook into the same space, yarn over hook and draw through a loop, (4 loops on hook), yarn over hook and draw through 4 loops (1 loop remains on hook).

Heart consists of two half which crochet separately, and then interwine between themselves.

For each half of heart work diagram A and B. The work begins with crochet a ribbons (diagram A), then work a half-round of heart (diagram B).

First half of heart crocheted by the yarn of pink colour.

The work begins with chain foundation of 30 ch for first ribbon. Then work first 3 rows follow diagram A. After that work next 6 ribbons without cutting yarn. Then work 4dc/sc in each top of ribbon and cut of the yarn.

Fasten the yarn to dc/sc of ribbons top and work 9 tr/dc follow diagram B. Connect each row of tr/dc by a dc/sc to top of ribbons.

Second half of heart crocheted by the yarn of pink, brown, red and white colours:

- 1 ribbon - brown yarn
- 2 ribbon - red yarn
- 3 ribbon - brown yarn
- 4 ribbon - white yarn
- 5 ribbon - brown yarn
- 6 ribbon - red yarn
- 7 ribbon - brown yarn

The work begins with chain foundation of 30 ch for first ribbon (brown yarn). Then work first 3 rows follow diagram A. After that work next 6 ribbons without cutting yarn (red, brown, white, brown, red and brown). Then work 4dc/sc with brown yarn in each top of ribbon and cut of the yarn.

Fasten the yarn of brown colour to dc/sc of ribbons top and work 9 tr/dc follow diagram B. Connect each row of tr/dc by a dc/sc to top of ribbons.

Diagram A

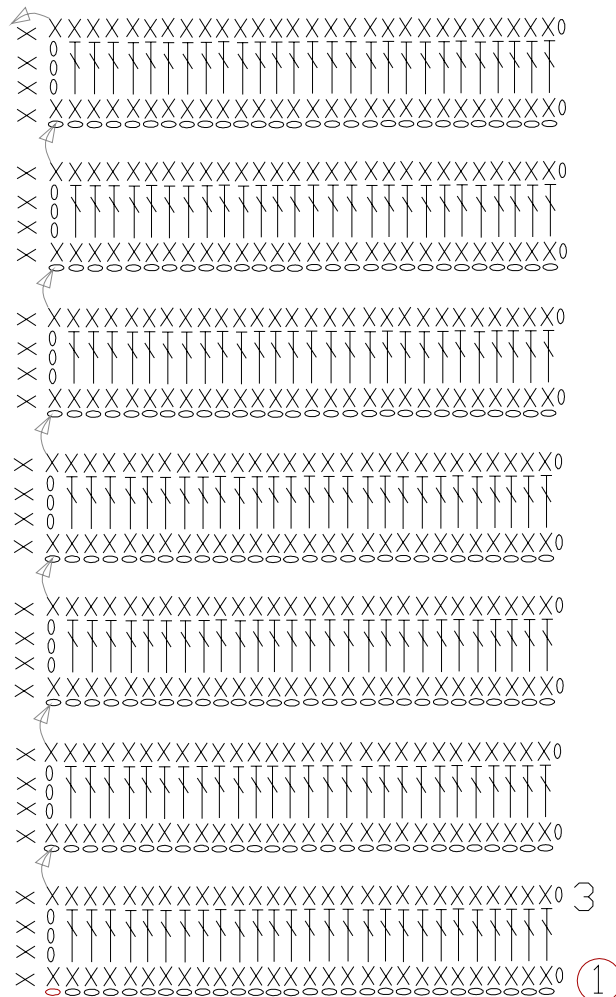
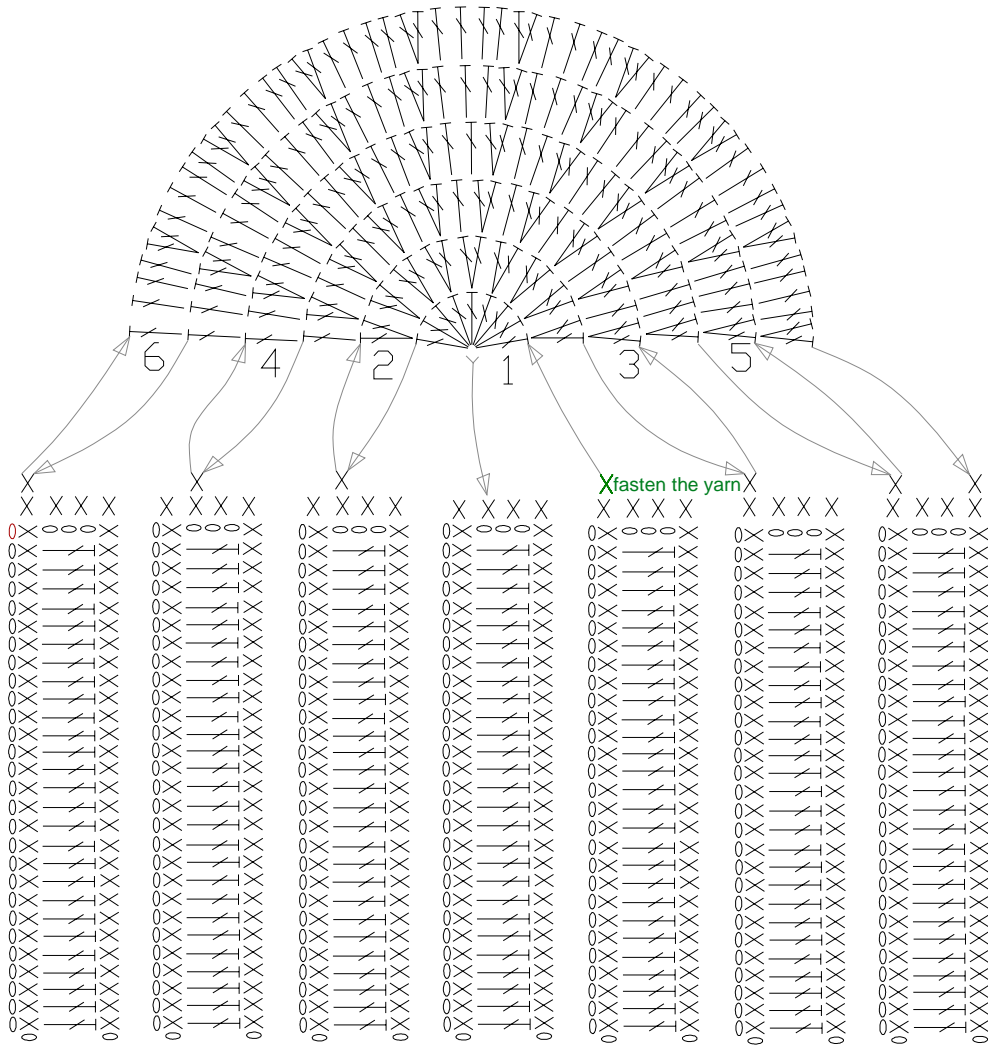


Diagram B



By means of pins interwine ribbons between themselves as shown in a photo. Fasten edges of ribbons by a pins and crochet the edge of heart (follow diagram C).

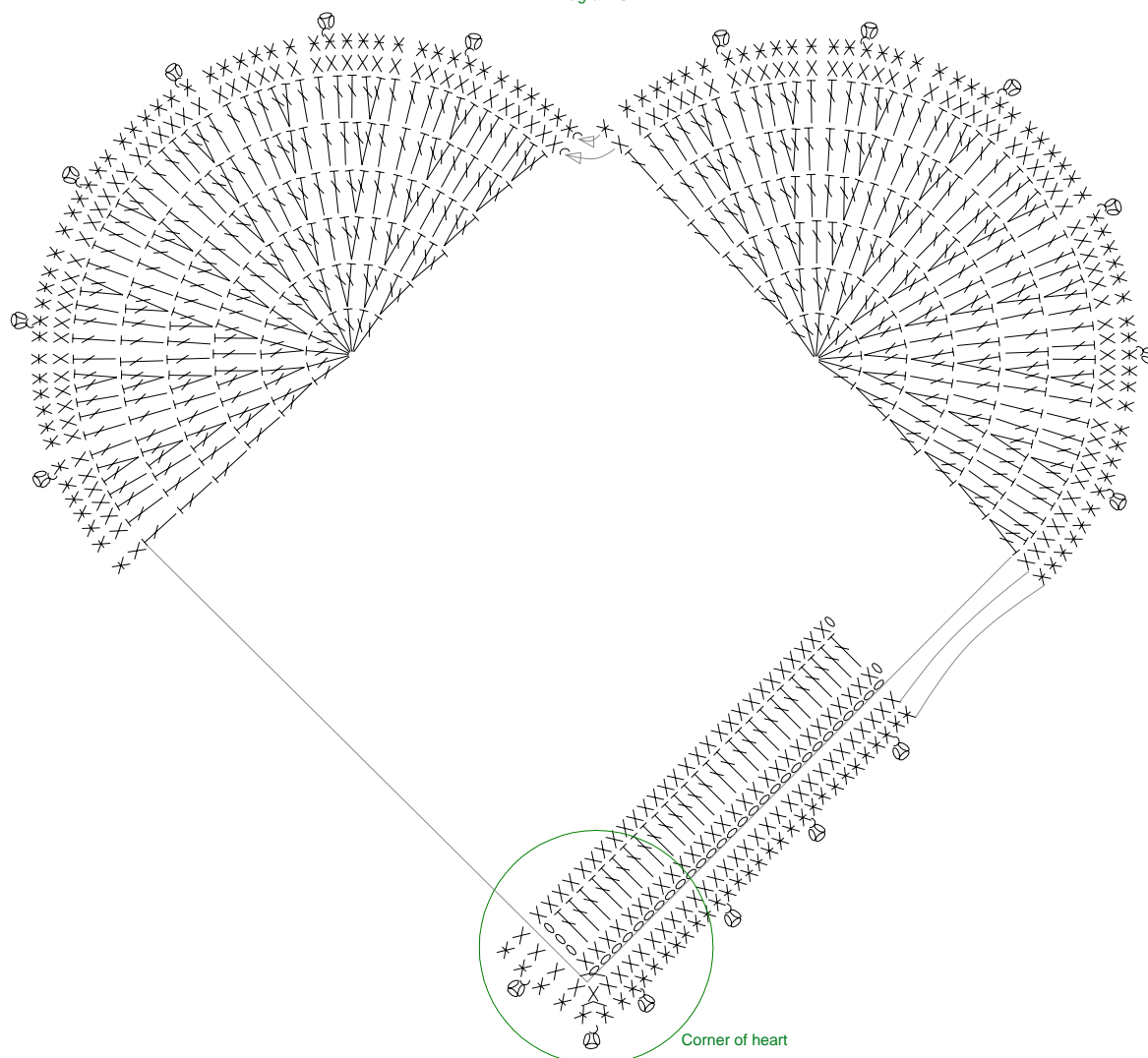




Work dc/sc in each tr/dc of half-round, then work dc/sc in 2 ribbon at once: insert hook into first dc/sc of pink yarn (this is the first dc/sc of 3rd row of 7th ribbon) and into the dc/sc of brown yarn (this is the last dc/sc of 3rd row of 7th ribbon) and work 1 dc/sc; insert hook into tr/dc of pink yarn and into the dc/sc of brown yarn and work 1 dc/sc; insert hook into the tr/dc of pink yarn and into the dc/sc of brown yarn and work 1 dc/sc; insert hook into the last dc/sc of this pink ribbon and into the dc/sc of brown yarn and work 1 dc/sc. Thus the end of one ribbon is fastened to lateral edge of other ribbon by means of 4 dc/sc. Continue so to crochet up to a corner of heart. To corner of heart work 3 dc/sc in the same space (see diagram C). Also crochet in the same way further up to a half-round, then work dc/sc in each tr/dc of half-round and at the end sl.st in first dc/sc of this round.

In next round work tr.dc/d.sc with picots of 3 ch (the last ch of picot joint by a sl.st to 4th stitch to righth from hook).

Diagram C



Work leaves and rose.

It is required about 10 cm of a white ribbon for leaves, 35 cm of a red ribbon for a rose and 10 cm of pink ribbon for grip of heart.

From a white ribbon forms leaves and sew them to heart. Then work a base for rose (see pictures below): make five legs like spider radiating from center.

Couching red ribbon.

Bring ribbon up at center and begin weaving over and under the legs in a circular manner. To end, insert needle beneath flower and pull through heart.

Work grip with pink ribbon.

