

**ONLINE APPENDIX:  
A History of Violence: The Culture of Honor and Homicide in the US South**

**Pauline Grosjean**

**Table A1: Descriptive statistics**

Variable	Obs	Mean	s.d.	Min	Max
<i>A: 1790 Census or 1790 overlap</i>					
Homicide rate (i)	147	4.38	4.36	0	23.86
White offender homicide rate (i) (ii)	147	1.43	1.41	0	8.83
Proportion Scots-Irish 1790	147	0.07	0.06	0	0.33
Population density 1790	147	1.96	3.74	0.05	36.35
Number of slaves 1790, in 1000s	147	2.48	4.92	0	50.63
Prop. whites literate 1900	147	0.95	0.05	0.75	1
Prop. blacks literate 1900	147	0.69	0.19	0.31	1
Log manufacturing wages 1900	147	13.57	2.42	8.59	19.03
Log agricultural output 1900	147	15.31	2.21	10.71	20.70
Log aggregate earnings 2000	147	21.48	1.55	18.26	24.71
Prop. pop. urban 2000	147	0.61	0.31	0	1
Prop. pop black 2000	147	0.13	0.15	0.01	0.64
Ethnic fragmentation index 2000	147	0.29	0.18	0.03	0.78
Income Gini 2000	147	0.43	0.04	0.34	0.59
Prop. whites high school degree 2000	147	0.77	0.20	0.21	1
Prop. blacks high school degree 200	147	0.16	0.18	0	0.77
Homicide rate - victim & offender acquaintances (i)	138	1.02	1.64	0	14.23
Homicide rate - blunt object (i)	138	0.26	0.44	0	3.47
Weapon carry offenses, rate (i)	147	53.2	38.43	0	203.04
Drunkenness offenses, rate (i)	147	109.27	140.44	0	525.58
Robbery, rate (i)	147	29.18	24.9	0	151.09
Weapon carry offenses, white offender (i) (ii)	147	19.3	14.67	0	114.41
Drunkenness offenses, white offender (i) (ii)	147	64.48	84.79	0	352.34
Robbery, white offender (i) (ii)	147	9.33	8.8	0	49.34
Total Scots-Irish 1790	147	1169	1220	0	5934
Distance to Shallow Ford (in 1000 km)	147	0.56	0.19	0.11	0.96
Political competition state elections	147	-24.67	17.97	-45.52	-0.23
Newspapers per capita 1840	147	8.55	3.18	2.86	14.7
County antiquity in 1790, in decades	147	57.5	50.31	-6.2	15.5
<i>B: 2000 Census and GSS</i>					
Homicide rate (i)	2,845	5.09	6.22	0	120.77
White offender homicide rate (i) (ii)	2,845	2.25	4.61	0	187.27
Proportion Scots-Irish ancestry 2000	2,845	0.03	0.02	0	0.17
County antiquity in 2000, in decades (log)	2,956	5.22	0.29	4.44	5.95
Weapon at home	37,464	0.24	0.42	0	1
Confidence Exec. Branch Fed. Gov.	21,447	0.84	0.68	0	2
Confidence US Supreme Court	21,166	1.19	0.66	0	2

*Notes:* (i) All crime and offenses rates are averages for 2000-2007, per 100,000 people. (ii) “White offender” is defined as the number of the relevant offense or crime for which a white offender has been arrested, over the white population.

Source: US Census, 2000 Census of State and Local Law enforcement agencies, UCR, SHR, National Association of Counties.

**Table A2: Correlations between state and county-level institutional quality measures and Scots-Irish presence in 1790**

	1	2	3	4	5	6	7	8
	Political competition in state elections 1880				County antiquity in 1790		Newspapers pc 1840	
County antiquity in 1790	1.46 [2.17]	4.27* [2.26]						
Newspapers pc 1840			3.31** [1.61]	3.21** [1.35]				
Prop. SI 1790					-1.22*** [0.43]	-0.66 [0.41]	-1.50 [1.17]	-0.42 [1.29]
Region dummies	yes	yes	yes	yes	yes	yes	yes	yes
Slave pop. 1790	no	yes	no	yes	no	yes	no	yes
Population in 1790	no	yes	no	yes	no	no	no	no
Population in 1840	no	yes	no	yes	no	no	no	yes
Population in 1880	no	yes	no	yes	no	no	no	no
Prop. white literate in 1900	no	yes	no	yes	no	no	no	no
Prop. black literate in 1900	no	yes	no	yes	no	no	no	no
White population 1790	no	no	no	no	no	yes	no	yes
Male population 1790	no	no	no	no	no	yes	no	yes
Observations	150	147	147	144	150	150	147	146
R-squared	0.63	0.70	0.68	0.73	0.05	0.18	0.89	0.90

*Notes:* The table reports OLS estimates. The unit of observation is a county. The dependent variable in Column 1 to 4 is Besley, Persson and Sturm (2010)'s party-neutral measure of political competition, computed as (minus) the absolute value of the difference between average vote share of the Democrats in all statewide elections and 50. The sample average is -24.67. A higher value indicates more competition. "County antiquity in 1790" is the log of the difference between 1790 and the county original incorporation date (+10 to correct for negative values for counties that did not yet exist formally in 1790). The sample average is 2.71. "Newspapers pc 1840" is the average number of daily, bi- and tri-weekly newspapers in the county, per 100,000 people. The sample average is 8.58. "Prop. SI 1790" is the proportion of Scots-Irish settlers in the 1790 county population. All regressions are with a constant. Robust standard errors are reported in brackets. \*\*\* significantly different from 0 at the 1% level, \*\* significantly different from 0 at the 5% level, \* significantly different from 0 at the 10% level.

Source: US Census, UCR, Berkowitz and Clay (2011), National Association of Counties.

**Table A3 Panel A: Balance of covariates – counties below and above median of proportion of Scots-Irish in 1790**

	<b>Below Median Prop. Scots- Irish 1790 (1)</b>	<b>Above Median Prop. Scots- Irish 1790 (2)</b>	<b>t-stat of difference (1)-(2)</b>
<i>Panel A: Whole Sample</i>			
Population density 1790	1.90	2.05	-0.25
Slave population in 1790	3214	1692	1.88
Log manufaring wages in 1900	13.21	13.92	-1.77
Log agricultural output in 1900	14.97	15.65	-1.87
White literacy in 1900	0.94	0.95	-0.99
Prop. whites with high school degree in 2000	0.76	0.79	-0.87
Log aggregate earnings in 2000	21.21	21.75	-2.14
Prop. Urban in 2000	0.57	0.65	-1.66
<i>Panel B: North</i>			
Population density 1790	2.31	2.34	-0.03
Slave population in 1790	491	409	0.53
Log manufacturing wages in 1900	15.09	14.83	0.74
Log agricultural output in 1900	16.59	16.43	0.46
White literacy in 1900	0.98	0.97	2.55
Prop. whites with high school degree in 2000	0.82	0.84	-0.39
Log aggregate earnings in 2000	22.12	22.07	0.21
Prop. Urban in 2000	0.72	0.7	0.43
<i>Panel C: Deep South</i>			
Population density 1790	1.38	0.80	1.04
Slave population in 1790	6301	5733	0.17
Log manufacturing wages in 1900	10.8	10.93	-0.21
Log agricultural output in 1900	12.92	13.13	-0.39
White literacy in 1900	0.9	0.88	0.64
Prop. whites with high school degree in 2000	0.67	0.56	1.23
Log aggregate earnings in 2000	19.99	20.21	-0.42
Prop. Urban in 2000	0.37	0.38	-0.14

**Table A3 Panel B: Balance of covariates – Americans of Scots-Irish ancestry today**

	<b>Non Scots- Irish ancestry</b>	<b>German ancestry</b>	<b>Scots-Irish ancestry</b>	<b>t-stat of difference (1)-(2)</b>	<b>t-stat of difference (2)-(3)</b>
	<b>(1)</b>	<b>(2)</b>	<b>(3)</b>		
<i>Panel A: Whole Sample</i>					
Total family income	10.61	10.92	10.86	-6.7	1.37
Highest year school	13.01	13.34	13.45	-9.45	-2.12
<i>Panel B: North</i>					
Total family income	10.85	11.12	11.05	-2.29	0.79
Highest year school	13.16	13.17	13.63	-4.49	-3.74
<i>Panel C: Deep South</i>					
Total family income	10.53	10.98	10.86	-4.53	1.48
Highest year school	12.77	13.42	13.38	-6.97	0.40

Source: US Census and General Social Survey.

**Table A4: Robustness of main specification to additional controls**

	1	2	3	4	5	6
	<b>White offender</b>					
Prop. SI 1790	1.89 [6.77]	-5.74 [8.39]	-0.91 [1.81]	-3.84+ [2.51]	-1.98 [1.93]	-4.52* [2.40]
Border South*Prop. SI	23.81** [9.69]	20.06** [8.16]	20.97* [11.95]	18.38* [9.98]	26.54*** [8.91]	21.61*** [8.19]
Deep South*Prop. SI	46.51** [20.06]	35.23** [17.12]	43.34** [20.74]	34.24+ [22.62]	41.51** [20.01]	30.65* [16.48]
Log agg. earnings 2000	0.12 [0.20]	0.25 [0.21]	-0.08 [0.18]	-0.15 [0.21]	0.15 [0.21]	0.24 [0.22]
Prop. pop. urban	-0.80 [0.70]	-1.72* [0.88]	-0.66 [0.70]	-1.13 [0.97]	-0.77 [0.80]	-1.68* [0.96]
Prop. pop. black	7.66*** [2.41]	6.39*** [2.27]	7.65 [9.05]	5.12 [8.46]	7.53*** [2.50]	6.48*** [2.36]
Ethnic fragm. 2000	-1.89 [1.68]	-0.32 [1.85]	1.84 [2.89]	4.04 [3.07]	-0.29 [1.80]	1.04 [1.97]
Income Gini 2000	0.15 [3.13]	-4.16 [2.88]	0.90 [4.57]	0.02 [4.54]	-0.35 [3.13]	-4.28+ [2.89]
Prop. whites high school degree 2000	-1.54 [2.54]	-0.11 [2.84]	2.71 [3.91]	2.86 [4.10]	-2.16 [2.65]	-1.68 [2.69]
Prop. blacks high school degree 2000	-2.90 [3.09]	-1.05 [3.47]	0.20 [5.54]	-0.17 [5.70]	-3.19 [3.19]	-2.66 [3.29]
Prop. whites literate 1900	-8.02*** [2.83]	-6.82** [2.68]	-6.62 [5.85]	-7.61+ [4.91]	-7.55** [3.07]	-6.39** [3.05]
Prop. blacks literate 1900	-0.82 [1.39]	0.20 [1.42]	-1.92 [1.57]	0.24 [1.74]	-0.26 [1.40]	0.71 [1.54]
Log manufacturing wages 1900	-0.19 [0.32]	-0.09 [0.36]	-0.35 [0.39]	0.04 [0.44]	-0.21 [0.34]	-0.16 [0.38]
Log agricultural output 1900	0.29 [0.33]	0.17 [0.37]	0.47 [0.41]	0.11 [0.46]	0.24 [0.36]	0.18 [0.39]
Prop. SI squared	-8.10 [19.69]	5.34 [22.55]				
Pop. density 1790	-0.02 [0.03]	-0.00 [0.03]	-0.01 [0.04]	-0.02 [0.04]	-0.03 [0.03]	-0.02 [0.03]
Slave pop. 1790	0.03** [0.02]	-0.01 [0.03]	-0.17 [0.22]	0.06 [0.25]		
Officer per cap. 2000	no	no	no	no	yes	yes
Log SLLEA budget per cap	no	no	no	no	yes	yes
County surface	no	no	no	no	yes	yes
Min elevation	no	no	no	no	yes	yes
Max elevation	no	no	no	no	yes	yes
Mean elevation	no	no	no	no	yes	yes
Standard dev. elevation	no	no	no	no	yes	yes
Region dummies	yes	yes	yes	yes	yes	yes
State dummies	no	yes	no	yes	no	yes
Interaction all controls and region dummies	no	no	yes	yes	no	no
Observations	145	145	145	145	142	142
R-squared	0.44	0.54	0.57	0.66	0.48	0.59

*Notes:* See notes to Table 2 in main text. For economy of space, only results pertaining to white offender rates are presented.

**Table A5: Homicide and Scots-Irish settlers in 1790: alternative specifications**

	1	2	3	4	5	6	7	8	9	10	11	12
<i>Independent var:</i>	<b>Homicide rate</b> <i>Log (Prop SI 1790)</i>				<b>Homicide rate</b> <i>Number of SI in 1790</i>				<b>Homicide rate</b> <i>Log (number SI)</i>			
	<b>White offender</b>				<b>White offender</b>				<b>White offender</b>			
Main effect	0.53 [4.18]	-9.70* [5.38]	-0.50 [1.96]	-4.68 [2.89]	0.01 [0.20]	-0.67** [0.26]	0.30 [0.33]	-0.20 [0.31]	-0.01 [0.11]	-0.24 [0.16]	-0.01 [0.13]	-0.19 [0.14]
Interaction with Border South	46.11** [21.44]	36.97* [19.85]	26.97*** [10.05]	21.03** [8.07]	1.98 [2.02]	4.08* [2.15]	0.47 [1.88]	2.90 [2.08]	-0.18 [0.71]	0.53 [0.71]	-0.48 [0.69]	0.35 [0.63]
Interaction with Deep South	130.21** [62.48]	90.02 [54.50]	50.11** [20.03]	35.77** [17.10]	7.06** [3.44]	3.22 [3.37]	2.72* [1.40]	2.07 [1.34]	3.65*** [1.05]	2.56*** [0.91]	1.45*** [0.45]	1.24*** [0.41]
Historical controls	yes	yes	yes	yes	yes	yes	yes	yes	yes	yes	yes	yes
Total pop. 1790	no	no	no	no	yes	yes	yes	yes	yes	yes	yes	yes
2000 controls	yes	yes	yes	yes	yes	yes	yes	yes	yes	yes	yes	yes
Region dummies	yes	yes	yes	yes	yes	yes	yes	yes	yes	yes	yes	yes
State dummies	no	yes	no	yes	no	yes	no	yes	no	yes	no	yes
Observations	145	145	145	145	145	145	145	145	145	145	145	145
R-squared	0.58	0.64	0.44	0.54	0.59	0.67	0.59	0.66	0.46	0.57	0.46	0.57

Notes: See notes to Table 2 in main text.

**Table A6: Robustness to other offenses as controls**

	1	2	3	4	5	6	7	8
	<b>Homicide rate</b>				<b>White offender</b>			
Prop. SI 1790	-2.31 [2.93]	-2.44 [4.37]	-0.84 [2.93]	-2.53 [4.32]	-1.18 [1.59]	-1.52 [2.24]	-1.41 [1.61]	-1.57 [2.26]
Border South* Prop. SI 1790	38.68 [25.25]	15.45 [15.98]	12.45 [14.48]	8.82 [15.46]	18.16 [12.78]	5.76 [7.02]	9.69 [6.89]	6.32 [7.72]
Deep South* Prop. SI 1790	108.05** [48.53]	89.76** [38.82]	124.69*** [43.59]	110.31*** [38.93]	51.37*** [17.15]	34.58** [14.25]	51.63*** [15.88]	34.37** [14.52]
Weaponcarry, total or white	0.01 [0.01]	0.03** [0.01]	-0.02* [0.01]	0.02 [0.02]	-0.00 [0.01]	0.01 [0.01]	-0.01 [0.01]	0.02 [0.01]
Drunkenness, total or white	0.00 [0.00]	0.00 [0.00]	-0.00 [0.00]	-0.00 [0.01]	-0.00 [0.00]	0.00 [0.00]	-0.00 [0.00]	-0.00 [0.00]
Robbery, total or white	0.06*** [0.02]	0.05*** [0.02]	0.10*** [0.02]	0.07*** [0.02]	0.08*** [0.02]	0.08*** [0.01]	0.09*** [0.02]	0.07*** [0.02]
Historical controls	yes	yes	yes	yes	yes	yes	yes	yes
2000 controls	yes	yes	yes	yes	yes	yes	yes	yes
Region dummies	yes	yes	yes	yes	yes	yes	yes	yes
State dummies	no	yes	no	yes	no	yes	no	yes
Interaction all offenses & region dummies	no	no	no	no	no	no	no	no
Observations	145	145	145	145	145	145	145	145
R-squared	0.69	0.76	0.76	0.78	0.57	0.69	0.65	0.71

*Notes:* See notes to Table 2 in main text. All reported offenses rates are yearly average rates for 2000-2007, per 100,000 people. “White offender” or “white”: is defined as the rate of white offenders for the relevant offenses over the white population.

**Table A7: Falsification: proportion of Germans in 1790 in Table 2**

	1	2	3	4	5	6
	<b>Homicide rate</b>			<b>White offender</b>		
Prop. Germans 1790	8.62*** [2.80]	6.84*** [2.34]	4.59 [3.23]	3.98*** [1.23]	3.35*** [1.16]	2.76 [1.77]
Border South*Prop. Germans 1790	-11.12 [6.97]	1.72 [6.43]	0.77 [6.54]	-4.01 [3.13]	-0.51 [3.29]	-1.29 [3.73]
Deep South*Prop. Germans 1790	-17.46 [10.65]	-2.15 [7.53]	-2.11 [5.62]	-3.68 [4.87]	-0.19 [3.97]	-0.40 [2.87]
Historical controls	no	yes	yes	no	yes	yes
2000 controls	no	yes	yes	no	yes	yes
Region dummies	yes	yes	yes	yes	yes	yes
State dummies	no	no	yes	no	no	yes
Observations	147	144	144	147	144	144
R-squared	0.22	0.60	0.66	0.16	0.42	0.55

*Notes:* See notes to Table 2 in main text.



**Table A8: Homicide, institutional quality and Scots-Irish settlers: selection tests**

	1	2	3	4	5	6	7	8
	<b>Homicide rate</b>				<b>White offender</b>			
Newspapers pc 1840	0.08 [0.20]	0.10 [0.20]	-0.69 [0.52]	-0.70 [0.53]	0.08 [0.06]	0.08 [0.06]	-0.35* [0.19]	-0.36* [0.19]
County antiquity	-1.77 [1.44]	-1.71 [1.46]	-0.87 [1.67]	-0.95 [1.69]	-0.42 [0.37]	-0.40 [0.36]	0.07 [0.39]	0.04 [0.40]
Prop. SI 1790		3.86 [3.95]		-4.38 [4.91]		1.12 [1.78]		-1.96 [2.36]
Historical controls	yes	yes	yes	yes	yes	yes	yes	yes
2000 controls	yes	yes	yes	yes	yes	yes	yes	yes
Total pop. in 1790	yes	yes	yes	yes	yes	yes	yes	yes
Total pop. in 1840	yes	yes	yes	yes	yes	yes	yes	yes
Region dummies	yes	yes	yes	yes	yes	yes	yes	yes
State dummies	no	no	yes	yes	no	no	yes	yes
Observations	144	144	144	144	144	144	144	144
R-squared	0.58	0.58	0.65	0.65	0.39	0.39	0.53	0.54

*Notes:* See notes to Table 5 in main text.

**Table A9: Falsification: German ancestry in Table 7**

	1	2	3	4	5	6	7	8
	Homicide rate				White offender			
Prop German 2000	8.61*** [1.68]	5.59 [3.48]	12.12*** [3.98]	16.13* [8.22]	3.52*** [0.79]	0.95 [1.94]	4.08** [1.77]	2.58 [3.58]
Border South*Prop German 2000	5.71 [5.54]	6.98 [6.24]	21.25 [18.53]	12.67 [17.32]	4.61 [4.27]	6.86 [4.61]	2.00 [7.27]	-0.81 [6.64]
Deep South*Prop German 2000	-15.17*** [4.76]	-17.15*** [5.65]	-15.26 [16.53]	-7.98 [15.72]	-7.62*** [2.62]	-6.11* [3.25]	-1.97 [6.06]	1.54 [6.49]
West*Prop German 2000	-13.48** [5.32]	4.08 [6.92]			-14.11*** [3.50]	-2.63 [4.33]		
Midwest*Prop German 2000	-10.05*** [1.99]	-9.04** [3.67]			-4.62*** [1.00]	-2.08 [2.01]		
1900 controls	yes	yes	yes	yes	yes	yes	yes	yes
2000 controls	yes	yes	yes	yes	yes	yes	yes	yes
1790 controls	no	no	yes	yes	no	no	yes	yes
Region dummies	yes	yes	yes	yes	yes	yes	yes	yes
State dummies	no	yes	no	yes	no	yes	no	yes
Observations	2,361	2,361	144	144	2,361	2,361	144	144
R-squared	0.34	0.43	0.60	0.66	0.15	0.23	0.40	0.53

Notes: See notes to Table 7 in main text.

**Table A10: Falsification: German ancestry in Table 8**

	1	2	5	6	9	10
	<b>Weapon at home</b>		<b>Confidence Exec. Branch Fed. Gov.</b>		<b>Confidence US Supreme Court</b>	
German ancestry	0.03** [0.015]	0.03* [0.015]	0.02 [0.032]	0.03 [0.033]	0.01 [0.032]	0.03 [0.032]
Border South*German ancestry	-0.02 [0.033]	-0.01 [0.033]	-0.06 [0.065]	-0.06 [0.066]	-0.02 [0.065]	-0.04 [0.065]
Deep South*German ancestry	-0.03 [0.020]	-0.02 [0.020]	-0.04 [0.041]	-0.05 [0.042]	0.02 [0.041]	0.00 [0.041]
West*German ancestry	-0.01 [0.020]	-0.00 [0.020]	-0.05 [0.043]	-0.06 [0.043]	-0.04 [0.042]	-0.05 [0.043]
Midwest*German ancestry	-0.01 [0.018]	-0.01 [0.018]	-0.00 [0.038]	-0.01 [0.038]	-0.01 [0.038]	-0.02 [0.038]
Individual controls	yes	yes	yes	yes	yes	yes
Regional dummies	yes	yes	yes	yes	yes	yes
GSS year dummies	yes	yes	yes	yes	yes	yes
State dummies	no	yes	no	yes	no	yes
Observations	32,503	32,503	19,468	19,468	19,247	19,247
R-squared	0.13	0.13	0.04	0.04	0.02	0.02

*Notes:* See notes to Table 8 in main text.

**Table A11: Coefficients over time: 1980 to 2007 and 1904**

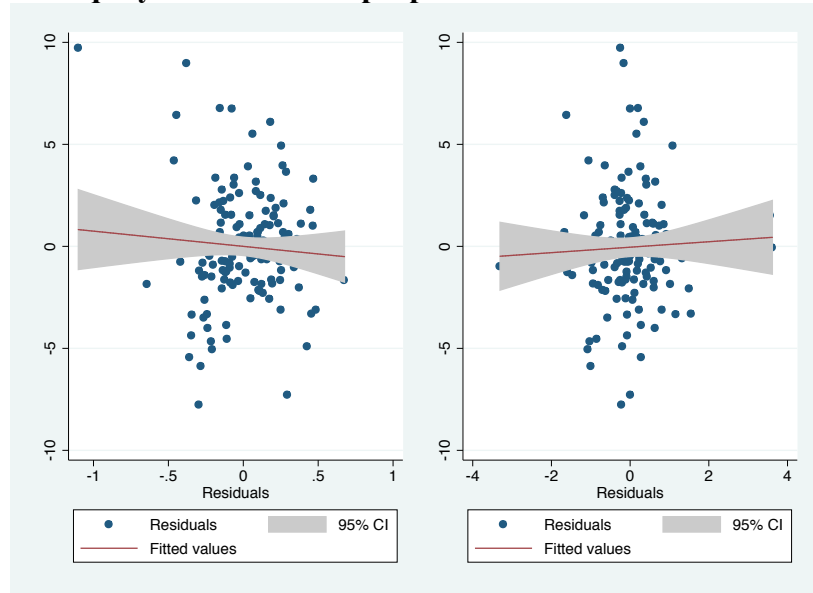
Year	1 1980	2 1981	3 1982	4 1983	5 1984	6 1986	7 1987	8 1988	9 1990
Prop. SI	94.53	104.01	69.91	63.38	69.71	63.23	37.36	11.56	62.58
	[0.01]	[0.01]	[0.01]	[0.14]	[0.18]	[0.12]	[0.18]	[0.80]	[0.12]
DS*Prop SI	182.59	110.24	181.55	68.35	20.27	85.51	52.75	146.52	90.54
	[0.00]	[0.34]	[0.00]	[0.12]	[0.70]	[0.26]	[0.37]	[0.01]	[0.04]
Region dummies	yes	yes	yes	yes	yes	yes	yes	yes	yes
Observations	147	147	147	147	147	147	147	147	147
R-squared	0.04	0.06	0.05	0.05	0.05	0.05	0.04	0.03	0.05
Year	10 1991	11 1992	12 1993	13 1994	14 1995	15 1996	16 1997	17 1998	18 1999
Prop. SI	31.59	41.56	63.23	62.32	51.38	51.38	50.07	58.44	50.49
	[0.38]	[0.17]	[0.03]	[0.03]	[0.12]	[0.12]	[0.09]	[0.03]	[0.01]
DS*Prop SI	17.97	45.46	89.67	166.25	159.07	159.07	37.48	89.56	55.41
	[0.82]	[0.34]	[0.00]	[0.02]	[0.00]	[0.00]	[0.25]	[0.13]	[0.02]
Region dummies	yes	yes	yes	yes	yes	yes	yes	yes	yes
Observations	147	147	147	147	147	147	147	147	147
R-squared	0.06	0.04	0.05	0.05	0.05	0.05	0.04	0.05	0.05
Year	19 2000	20 2001	21 2002	22 2003	23 2004	24 2005	25 2006	26 2007	27 1904
Prop. SI	22.61	33.45	42.37	56.35	52.98	43.62	34.40	41.32	1403.96
	[0.23]	[0.19]	[0.02]	[0.06]	[0.01]	[0.08]	[0.34]	[0.14]	[0.35]
DS*Prop SI	72.74	68.73	74.71	84.33	59.01	71.80	53.53	44.29	2204.91
	[0.00]	[0.015]	[0.01]	[0.12]	[0.12]	[0.015]	[0.18]	[0.12]	[0.15]
Region dummies	yes	yes	yes	yes	yes	yes	yes	yes	yes
Observations	147	147	147	147	147	147	147	147	13
R-squared	0.04	0.04	0.05	0.05	0.06	0.06	0.05	0.06	

*Notes:* Robust standard errors. P-values in parenthesis. “Prop. SI” denotes the proportion of Scots or Irish settlers in the 1790 county population. “DS” stands for Deep South. Interaction with Border South included but not reported for economy of space.

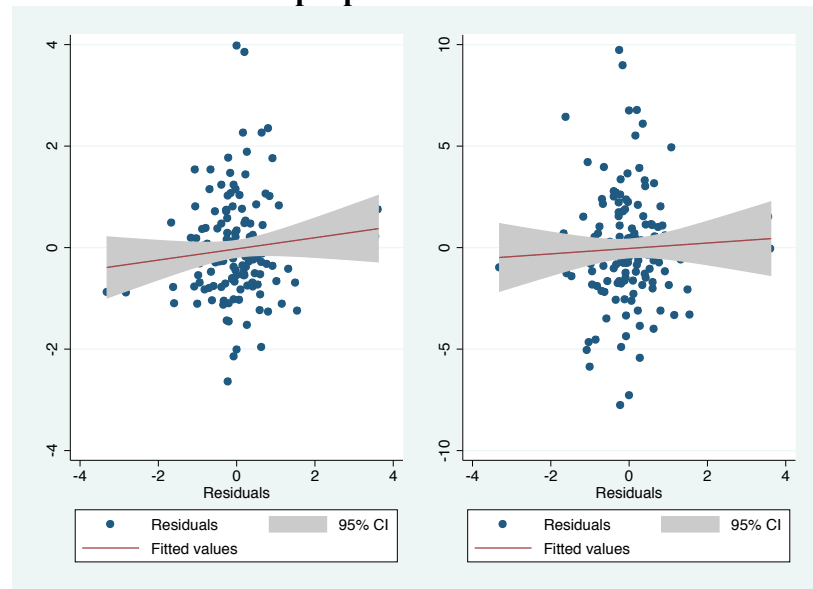
Source: US Census UCR, 1904 Census of “Prisoners and Juvenile Delinquents in Institutions”.

## FIGURES

**Figure A1: Residuals of equation (3) and residuals of a regression of county antiquity in 1790 on the proportion of Scots-Irish settlers**



**Figure A2: Residuals of equation (3) and residuals of a regression of newspaper pc in 1840 on the proportion of Scots-Irish settlers**



*Notes:* in each plot, the left panel is when the dependent variable in equation (3) in the main paper is the total homicide rate, the right panel when it is the white offender homicide rate. All the regressions control for the full set of controls described in the paper.